



[Society of Local Authority Chief Executives and Senior Managers]

SOLACE

**Graduate
Programme**

November 2006





SOLACE Graduate Programme

Who can apply ?

Anyone who is part of a graduate development programme within the public or private sector can apply

How do I apply ?

You can apply online at www.solace.org.uk/graduates

How much does it cost ?

The cost is £50 for each full membership year when you register online with a credit card

When does the membership year run to and from ?

The membership year runs from the day you join for one calendar year

Who is responsible within SOLACE for the Graduate Programme ?

James Jeynes, Head of Membership Services will be looking after the programme

Where can I find further details about SOLACE and the programme ?

You can find further details on the SOLACE website at www.solace.org.uk

Where is the SOLACE Office ?

The headquarters office is located in Westminster close to the Houses of Parliament

T: 0845 652 4010

E: hopehouse@solace.org.uk

W: www.solace.org.uk

SOLACE Graduate Programme

The SOLACE Graduate Programme has been created to capture future public sector leaders at an early stage in their careers with an overall aim to develop a wide base of public sector talent.

The SOLACE Graduate Programme is a new service provided by SOLACE for graduates who are members of recognised graduate development programmes throughout the UK.

SOLACE Graduate Programme members will be able to make inputs to SOLACE debates through the Focus Group which in turn will report through to the Society Management Board.

The SOLACE Graduate Programme costs £50 to join and will be managed by James Jaynes, Head of Membership Services who manages all membership services on behalf of SOLACE.

James Jaynes
Head of Membership Services

T: 0845 652 4010

E: james.jaynes@solace.org.uk





Diversity and Innovation

The focus of last year's presidential Think Tank. It is not too strong to say that diversity is a necessary condition for excellence in public services. Being open to the differences that exist between people and communities, whether it is class, age, disability and gender, or attitudes, values and approach, is vital in the globalised world of the 21st century. It is also vital that councils remain true to their localities and use their local, particular resources to meet local, particular needs. It is exciting to see so many councils doing this - innovating through their diversity and aiming for excellence in public service.

Children's Services

This is an exemplification of how SOLACE can influence social policy issues and we have significantly raised our game on this issue over the last year. Working with other significant stakeholders, formally through the Inter Agency Group and elsewhere, SOLACE has established itself firmly on the children's services landscape.

Efficiency, Performance and Procurement

The performance, efficiency and procurement agendas are cross-cutting and central to SOLACE members' roles. SOLACE is well placed on the national scene with Tim Byles, SOLACE Chairman as Local Government Procurement Champion and Barry Quirk, SOLACE Senior VP, as the Local Government Efficiency Champion.

Devolution and SOLACE

The devolved settlements have been recognised through the appointment of SOLACE officers in Northern Ireland, Scotland and Wales

For more information please contact:

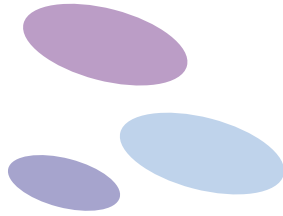
Mike Bennett

Assistant Director General

T: 0845 652 4010

E: mike.bennett@solace.org.uk





Headquarters Facilities

Visit our offices at:

1st Floor, Hope House
45 Great Peter Street
Westminster
London
SW1P 3LT

T: 020 7233 0081

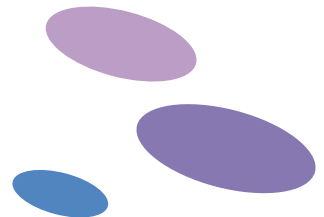
F: 020 7233 3302

E: ena.roche@solace.org.uk

SOLACE Member Room facilities*:

- Telephone
- Wireless or wired laptop network
- Fax machine
- Scanning
- Printing
- Email
- Hot and cold drinks
- PC with all required software
- Air conditioned lounge
- TV
- Access to the SOLACE library (booking required)
- Air conditioned board room for up to 15 people (booking required)
- Smaller meeting rooms (booking required)
- Data projector and flip charts available
- Latest local government publications and media information

* Office open Monday to Friday 9am - 5pm



SOLACE Officers...

Barry Quirk

Chairman
(Chief Executive, London Borough of Lewisham)

barry.quirk@solace.org.uk

John Schultz

President
(Chief Executive, Stockport Metropolitan Borough Council)

john.schultz@solace.org.uk

Byron Davies

Senior Vice President
(Chief Executive, Cardiff City Council)

bryron.davies@solace.org.uk

Trish Haines

Junior Vice President
(Chief Executive, Reading Borough Council)

trish.haines@solace.org.uk

Gillian Norton

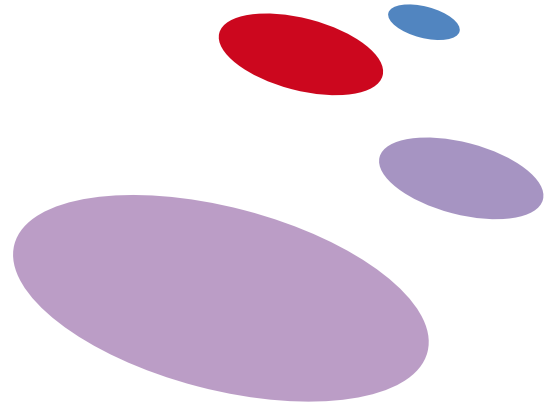
Society Treasurer
(Chief Executive, London Borough of Richmond)

gillian.norton@solace.org.uk

Ruth Hyde

Society Solicitor
(Chief Executive, Oadby & Wigston District Council)

ruth.hyde@solace.org.uk



SOLACE Management Team...

David Clark

Director General

david.clark@solace.org.uk

Mike Bennett

Assistant Director General

mike.bennett@solace.org.uk

Sandra Bailey

Membership Administrator

sandra.bailey@solace.org.uk

Philip George

Head of Events

phillip.george@solace.org.uk

James Jeynes

Head of Membership Services

james.jeynes@solace.org.uk

John Mullooly

Governance Manager and Company Secretary

john.mullooly@solace.org.uk

Gareth Newell

Executive Officer, Wales

gareth.newell@solace.org.uk

Natalie Picton

Head of Finance

natalie.picton@solace.org.uk

Graham Taylor

Head of Communications

graham.taylor@solace.org.uk

Tina Philp

Business Relations Support (Consultant)

tina.philp@solace.org.uk

Sonia Rheinlander

Business Relations Manager (Consultant)

sonia.rheinlander@solace.org.uk

Ena Roche

PA to the Director General

ena.roche@solace.org.uk

Kathryn Rossiter

Director of Development and Operations

kathryn.rossiter@solace.org.uk

Christine Horner

Policy Officer, Northern Ireland

christine.horner@solace.org.uk

Vacant

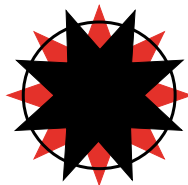
Policy Officer, Scotland

Claire Sherburn

Operations Administrator

claire.sherburn@solace.org.uk





SOLACE

Society of Local Authority
Chief Executives and Senior Managers

society of local authority chief executives and senior managers



ORACLE

